

WHAT'S COMING UP

February 1st

National Freedom Day

February 1st

Chinese New Year

February 1st

Black History Month Begins

February 2nd

Groundhog Day

February 4th

National Wear Red Day

February 12th

Lincoln's Birthday

February 14th

Valentine's Day

February 21st

Presidents' Day -
Washington's Birthday

February 25th

Carnival



FEBRUARY 2022 NEWSLETTER



Hello Residents,

Welcome to the second month of 2022. February brings thoughts of love, and you can tell from all the commercials about jewelry for that special one in your life! The month of February brings cupids, chocolates, hearts, and lots of red roses. The best way to celebrate Valentine's Day is to celebrate the love of God. The Bible says for God so loved the world that He gave His only Son. It is a time of giving and Valentine remind us of the gift of God to mankind and the true love of God in our hearts.

Would it not be the best gift this year if we spent our time loving as Christ did for the whole year, not just on Valentine's Day or at Christmas?

February will bring a number of events from What's Cooking Wednesday to resident parties for the Super Bowl. We will also be preparing for Fat Tuesday on March 1st as we plan for the seasons of Lent and Easter.

We will be having family nights coming each month, please watch for dates as we get closer. Our activities team will be focusing on Life Learning opportunities this year, not just parties but opportunities to volunteer and grow. We are excited about the upcoming year's calendar of events. We want to welcome you to join us throughout the year and look forward to seeing you in the community as often as you can.

We want you to know we thank you each day for allowing us to serve you and your loved one. It is with a grateful heart that we pray for each of you. Trust that we serve as Christ has served us. February is the month we celebrate love, let us love and share grace each day this month. Remember to give grace to everyone we meet throughout this year and serve with a grateful heart. Blessings to you and your family!

Rachelle Gillespie,
Executive Director



Birthday Social

Regency hosted everyone with a birthday in January with a surprise celebration. A photo booth was set up with props and cake was served.

BLACK HISTORY MONTH

Black History Month

Black History Month is celebrated throughout the month of February



BIG GAME

FRIDAY

YOU ARE INVITED!

Tailgate Parties – Every Friday from 2:30 pm – 3:30 pm

Residents know how to party! Everyone is invited to come eat, fellowship and have a great time together.

COMMUNITY STORY

Happy Febraury

It's hard to believe we are already into the second month of 2022.

There are a lot of exciting things planned for this month, a few highlights being our Super Bowl and Valentine's Day parties. Be sure to check your calendars for all dates, details and times of upcoming events.

Also, if you are working on New Year's resolutions, try one that will improve your health and outlook on life. We have much to be thankful for here at Regency. Make it a point to greet someone you don't already know, and get to know your neighbor a little better.

We look forward to doing lots of exciting things together soon, so have a great month!





It's Game Time! NFL Super Bowl LVI Party

February 13th

Residents from both buildings are invited to join the most watched sporting event of the year. Be ready to cheer for your favorite team, and gear up for some great food! Football season is a fun time to get together with friends and enjoy a little healthy competition. Keep an eye out for the location and time of this event!



Valentine's Day Party

February 14th at 1:30 pm

We'll celebrate the month of February with love. The DJ will spin some records and we'll be dancing! All residents, staff and their families are welcome to come and help celebrate this special event. We look forward to seeing you soon!



Soap Making Class

February 24th at 1:30 pm

Soap Making Class is an opportunity to learn how to make your own soap. Residents will bring their favorite perfume and/or cologne and make magic together.



Mardi Gras Celebration

March 1st at 2:00 pm

Regency Birmingham does our own version of Fat Tuesday. We celebrate with beads, King Cake, masks and lots of colorful colors. Join us to see who's going to take home the baby!

SUDOKU

PUZZLE 1

9	1	6		4		7	2	
8			6	2		5		
5				8	9	3		
	6				2			
			2	7				
		5				9		
	9	7	8				3	
	8			7	6		9	
4	5		1			6	8	7

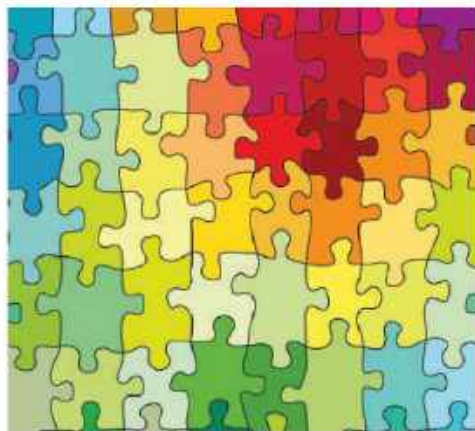
PUZZLE 2

3		2					8	9
	6	8		5	2	7	3	4
		9						
4					7			
	8	3	2		1	5	9	
			5					2
						2		
2	1	4	7	8		3	5	
5	3					9		8

Save
the
Date

February 13th — Super Bowl Party
February 14th — Valentine's Day Party

February 24th — Soap Making Class
March 1st — Mardi Gras Celebration



Tara Plumb

Shout out to Tara Plumb for being in the spotlight for February! Ms. Tara has been with us here at Regency for just two short months now. She's from Homewood, Alabama and has a host of family and friends by her side for support. Tara is smothered with lots of love here at Regency, and has met many new friends that keep her busy. During her spare time Tara enjoys listening to music, coloring and doing jigsaw puzzles. Tara's favorite artist is Milli Vanilli, a R&G duo from the 80's. Ms. Tara, thank you for being so kind and considerate. We are glad that you're here and are thankful that you chose Regency Retirement Village as your new home. We love you, Tara!

FUN FACTS

- » February fluctuates between having 28 and 29 days per year. The 29th day only occurs every 4 years during leap years.
- » The length of February was finalized when Julius Caesar remade the Roman calendar and assigned the month 28 days and 29 days. In 713 B.C., February was officially added to the Roman calendar.
- » If you were born in February, your birthstone is an amethyst and your flower is a primrose.
- » The western zodiac signs in February are Aquarius which is until February 19th, and Pisces, which is until March 20th.
- » Over time, the length of February kept changing. At one point, it had as little as 23 days.
- » In the Northern Hemisphere, February is the third month of winter. Meanwhile, in the Southern Hemisphere, February is the last month of summer. Between the Northern and Southern Hemispheres, February is the equivalent of August.
- » The name of February comes from the Latin word "februum" which means purification.
- » February was named after a purification ritual which was like an early Roman spring cleaning festival.
- » In Welsh, February is sometimes known as "y mis bach" which means "little month."
- » February and January were the last months added to the Roman numeral calendar.
- » The Saxons called February "Sol-monath" which means "cake month" because they would offer cakes to the gods during February.

WELCOME NEW RESIDENTS! 🏠

Ms. Tara Plumb
 Ms. Mary Francis Forbes
 Mr. Jon Freeze
 Mr. James Rindahl

Happy Birthday

Resident

Gwen Herren Feb. 10
 Annie Laurie Schapmann Feb. 20

Employee

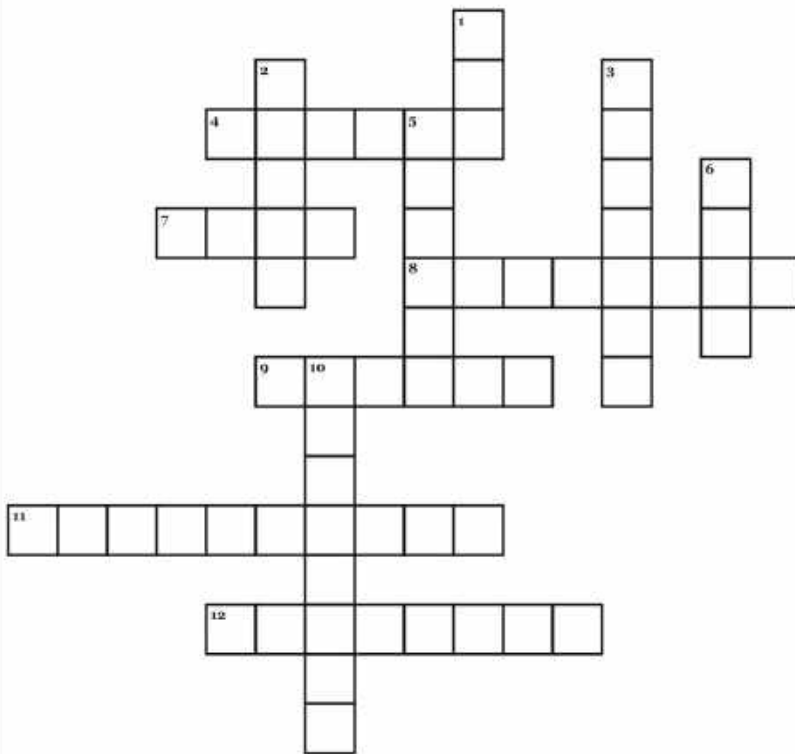
Raymond Smith Feb. 06
 David Jones Feb. 09
 Thyise Smith Feb. 09
 Latoya Sanders Feb. 18

WORD FIND

D Y A Q J E A Q A Z F K E G A E Y I Q C T Z F R L
 K L R S R O P V A M M G P M P H W A B H W G V K I
 V X Y L T A O Z Y T E R K A T M Z V S U U R A P N
 X J O H O R I R D F F T G S K H D Z X Z Y O L R C
 V B X G T V O L D I L S H H Q D E T R P T U E I O
 Q Z Q R Q Y E N R O O Q P Y V X I A N M O N N M L
 U Y K X E L B J A O A X O H S A J F R O G D T R N
 E A Q U A R I U S U A A N T C T S Q R T P H I O A
 G L U S M Y E X A V T D F E B R U A R Y S O N S D
 B S R A I H O S P I S C E S K G R A M M Y G E E U

- | | | | | |
|-----------|----------|-----------|-----------|--------|
| FEBRUARY | AMETHYST | AQUARIUS | VALENTINE | MASH |
| GROUNDHOG | PRIMROSE | PISCES | RAILROAD | HEARTS |
| LINCOLN | OX | ASTRONAUT | LOVE | GRAMMY |

CROSS-WORD



Across

- 4. Receiver of thousands of letters every Valentine's Day
- 7. The central figure in the annual Groundhog Day celebration, familiarly
- 8. "Mobile ____ Army Hospital"
- 9. Sole winner of the Best Disco Recording Grammy
- 11. These can be found in heart-shaped boxes this time of year
- 12. Flower that expresses you can't live without someone

Down

- 1. King whose burial chamber was unsealed in February 1923, familiarly
- 2. The ancient Roman god of love
- 3. Home state of Cape Canaveral
- 5. Inventor behind America's first motion picture studio
- 6. Year with an extra day
- 10. "This is the dawning of the age of ____"

EMPLOYEE OF THE YEAR

Leroy Minter

Leroy Minter has been chosen because of his dedication to Regency. Mr. Leroy has been a part of Dietary for two years. Leroy has gone above and beyond what has been requested of him, in many meaningful and substantial ways.

Leroy came to work and fulfilled his responsibilities to his Dietary team and anyone else who needed help even on the hardest days. Leroy has two sons, enjoys landscaping and being a jack of all trades. Mr. Leroy, we sincerely appreciate all you do!

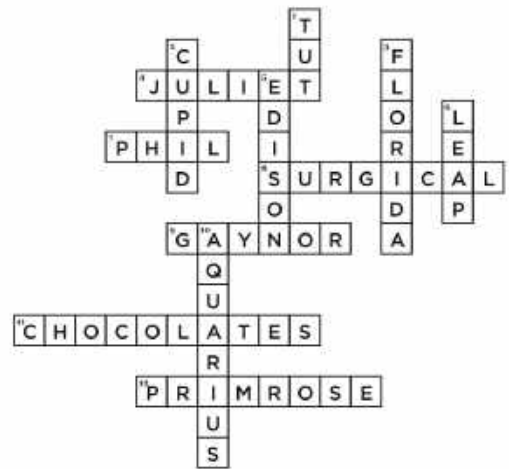
EMPLOYEE OF THE MONTH

Thyise Smith

Our employee of the month for February is Thyise Smith. Thyise has been here at Regency for almost three years as a caregiver. Thyise has been chosen again for her outstanding work ethic and the hard work that she gives to the community every day.

Thyise has such a kind and caring heart and loves her job here at Regency. She stated that she's thankful to come to work and do her job to the best of her ability. One of the most important things in Thyise's life the love of the Lord in her. Thyise, we appreciate all you do and congratulations to you once again for the outstanding work that you put in here at Regency Retirement Village!

ANSWER KEY



CONNECT WITH US

 [Facebook.com/RegencyBirmingham](https://www.facebook.com/RegencyBirmingham)

 [RegencyBirmingham.com](https://www.RegencyBirmingham.com)

PUZZLE 1

9	1	6	3	5	4	8	7	2
8	7	3	6	2	9	1	5	4
5	2	4	7	1	8	9	3	6
7	6	8	9	3	5	2	4	1
1	4	9	2	8	7	3	6	5
2	3	5	4	6	1	7	9	8
6	9	7	8	4	2	5	1	3
3	8	1	5	7	6	4	2	9
4	5	2	1	9	3	6	8	7

PUZZLE 2

3	5	2	4	7	6	1	8	9
1	6	8	9	5	2	7	3	4
7	4	9	8	1	3	6	2	5
4	2	5	6	9	7	8	1	3
6	8	3	2	4	1	5	9	7
9	7	1	5	3	8	4	6	2
8	9	7	3	6	5	2	4	1
2	1	4	7	8	9	3	5	6
5	3	6	1	2	4	9	7	8